

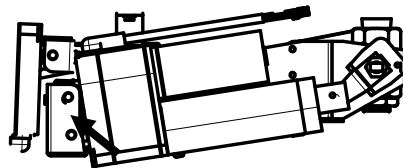
LOV Linear Actuator Replacement Kit

826-3295

This kit provides a replacement linear actuator for a LOV fryer and includes three additional brackets, which are used when installing the actuator on the return side of a LOV electric fryer.

NOTE: Bracket kit only necessary on LOV electric fryers.

The actuator bracket provides additional room below the frypot for the actuator's electrical wiring, protecting it from the heat of the pot.



New Actuator Bracket

The second bracket, a vertical hanging bracket, ensures the new actuator is properly aligned. The third bracket allows for the contactor box on the return side to be slightly lowered, making room for the new actuator position.

It is not necessary to use the additional brackets in other positions on electric LOV fryers and the brackets are not necessary at all on gas LOV fryers.

1. The contactor box under an actuator to be replaced must be lowered.
2. If the failed actuator is above a side-mounted contactor box, remove and discard the rearmost screw securing the top of the contactor box. **See Figure 1.** The screw will be inaccessible after the box is lowered.
3. Side-mounted boxes are connected to the vertical cabinet channel with brackets. Center-mounted boxes are connected to the horizontal cabinet channels with brackets. **See Figures 2-3.**
4. Remove and discard the rear bracket on the contactor box under the failed actuator.
5. In some cases, the AIF board must be lowered to make space for the new actuator bracket and pin. Loosen and lower the AIF board if necessary. **See Figure 4.** **NOTE:** Servicing an actuator behind the ATO box may require moving the ATO box to access the AIF board mounting screw.
6. Remove the failed actuator, detaching its lead from the AIF board. Ensure the valve bracket is fully closed. Use a pin and the alignment holes on the valve bracket to fully close the bracket. **See Figure 5.**
7. Remove the existing vertical bracket and replace it with the

In Kit 826-3295		
Part #	Description	QTY
2601377	Actuator bracket	1
2401434	Strap, actuator	1
8091114	Clevis Pin 1/4 X 2-1/2	2
8101776	Clip	3
8122332	Actuator	1
2200650	Contactor Box Mounting bracket	1
8090361	Drill-point screw	4
8197264	Instructions	1



Figure 1: If the failed actuator is over a side-mounted contactor box, remove the rearmost screw from the top of the contactor box. The lower position of the new actuator requires a lower position for the box. The screw is inaccessible after the box is lowered.



Figures 2 (left) and 3 (above): The existing contactor box brackets are shown left and above. They are replaced if they are below a linear actuator to be replaced.

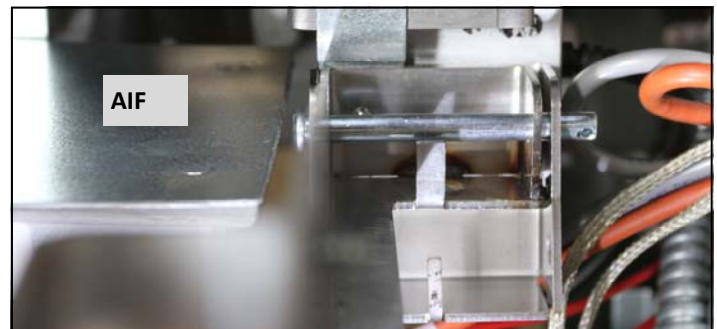


Figure 4: The AIF board (above left) must be lowered to allow placement of the bracket's pin.

819-7264
9/15

Continued on Back

provided bracket. **See Figure 6.**

8. Insert the bracket hanger in the existing bracket, securing it with a provided pin and Clevis clip. **See Figure 7.**
9. Position the new actuator, securing it with a provided pin and Clevis clip in the lower hole in the bracket. **See Figure 8.**
10. Ensure the wire exiting the top of the actuator does not contact the frypot bottom.
11. Align the pushing arm of the actuator with the valve bracket and insert pin.
12. Reposition the AIF board (if necessary). Reattach the actuator lead.
13. Position the new bracket as shown in **Figure 9** on a center-mounted contactor box. Use removed cabinet screws to mount the bracket to the box. Use provided drill-point screws to secure the bracket to the rear channel. A 90° drill fixture is helpful in installing the drill-point screws.
14. Secure a side-mounted contactor box using the same provided bracket. **See Figure 10.** Attach the bracket to the box with existing cabinet screws. Align the middle hole of the bracket to the lowest previously used bracket hole on the channel and use an existing cabinet screw to secure. Use a drill-point screw to secure the lower position.
15. Return fryer to service and cycle actuator to test operation.



Figure 5: Use a pin to align the valve bracket with its alignment hole, ensuring the valve is fully closed. See arrow.

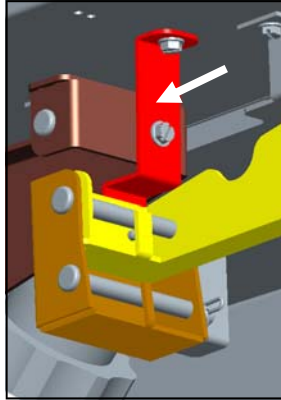


Figure 6: Remove and replace the vertical hanging bracket.

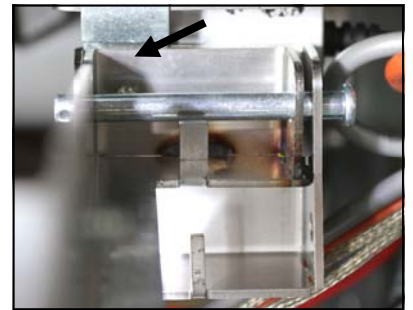


Figure 7: Position the provided bracket (see arrow) on the existing bracket, securing it with a pin and Clevis clip.



Figure 9: (Center-Mounted Contactor Box) Position the provided contactor box bracket, as shown. Use cabinet screws to attach it to the contactor box and provided drill-point screws to secure it to the cabinet channel.

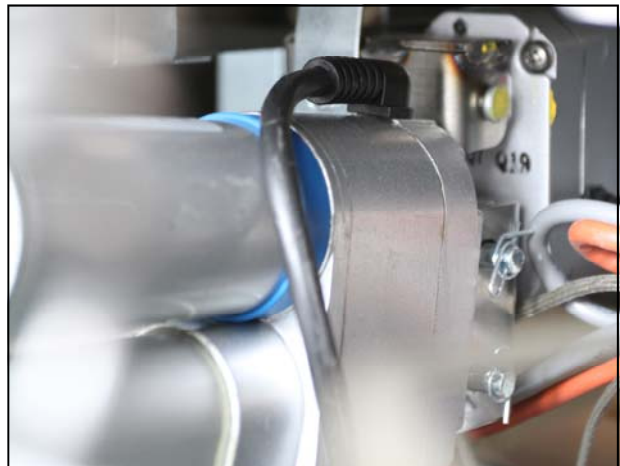


Figure 8: Attach the new actuator to the bracket, securing it with a pin and Clevis clip.

Figure 10: (Side-Mounted Contactor Box) Position the provided contactor box bracket, as shown. Use cabinet screws to attach it to the contactor box. Use an existing cabinet screw to attach the bracket's center hole to the lower existing bracket hole in the cabinet channel. Use a drill-point screw to secure the bracket's lower hole.

